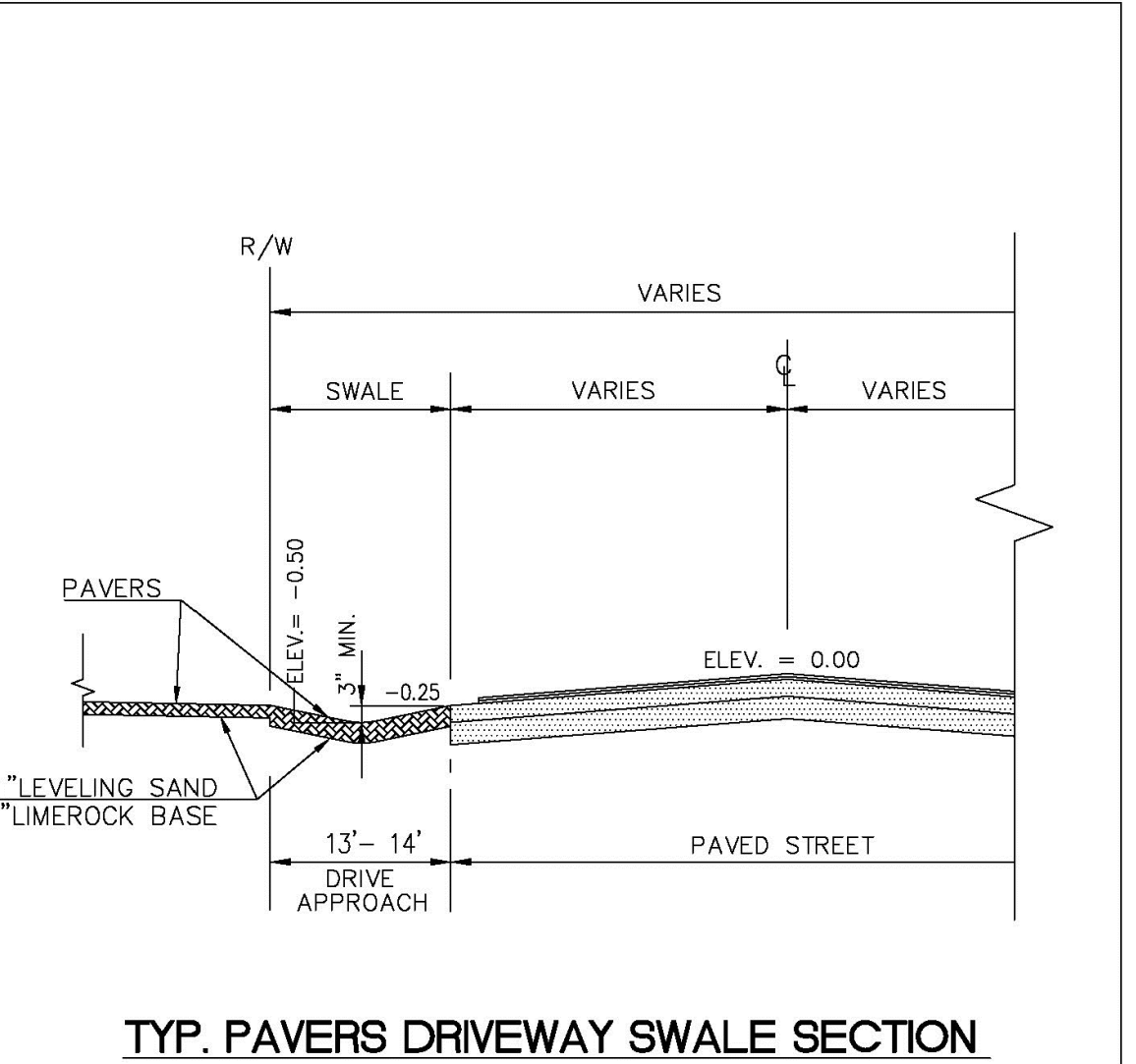
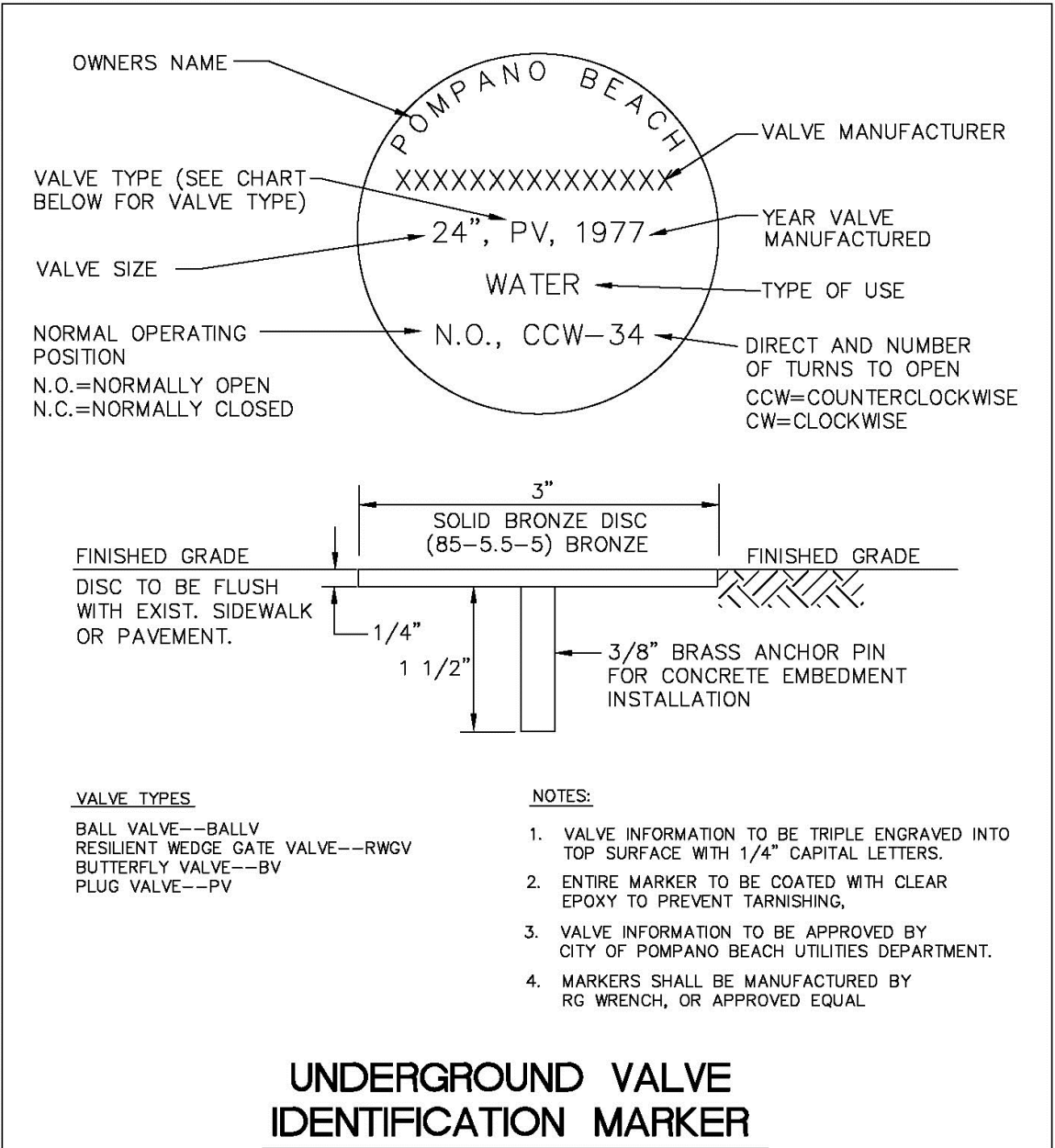


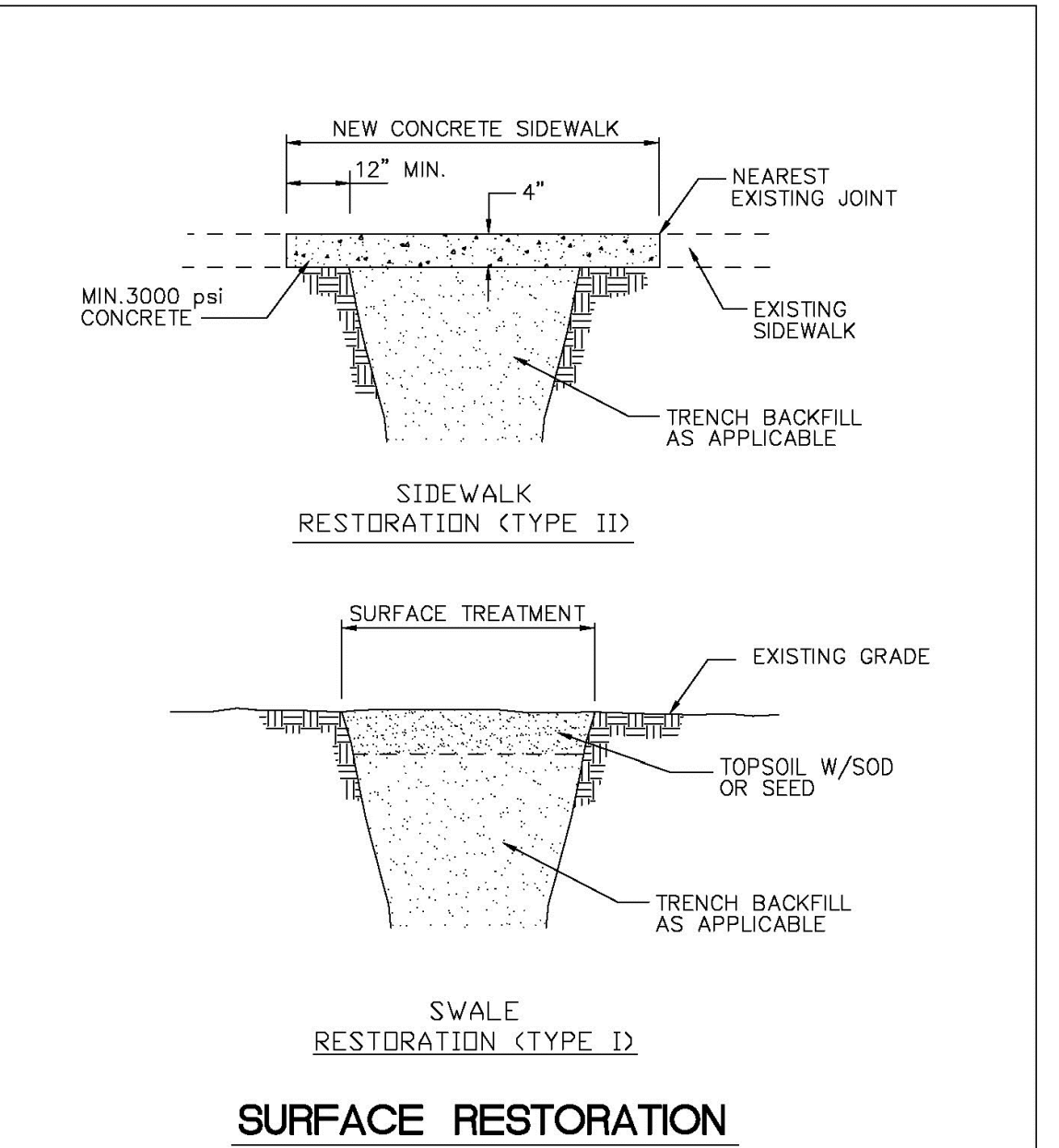
ENGINEERING STANDARDS 2025			
REVISIONS		ENGINEERING DIVISION CITY OF POMPAÑO BEACH	TYPICAL METER BANK
BY	DATE		
TOW	02-09	SCALE: N.T.S.	DATE: MAY 2022 DWG. NO. 113-1
S.S.	05-2011		
S.S.	11-2012		



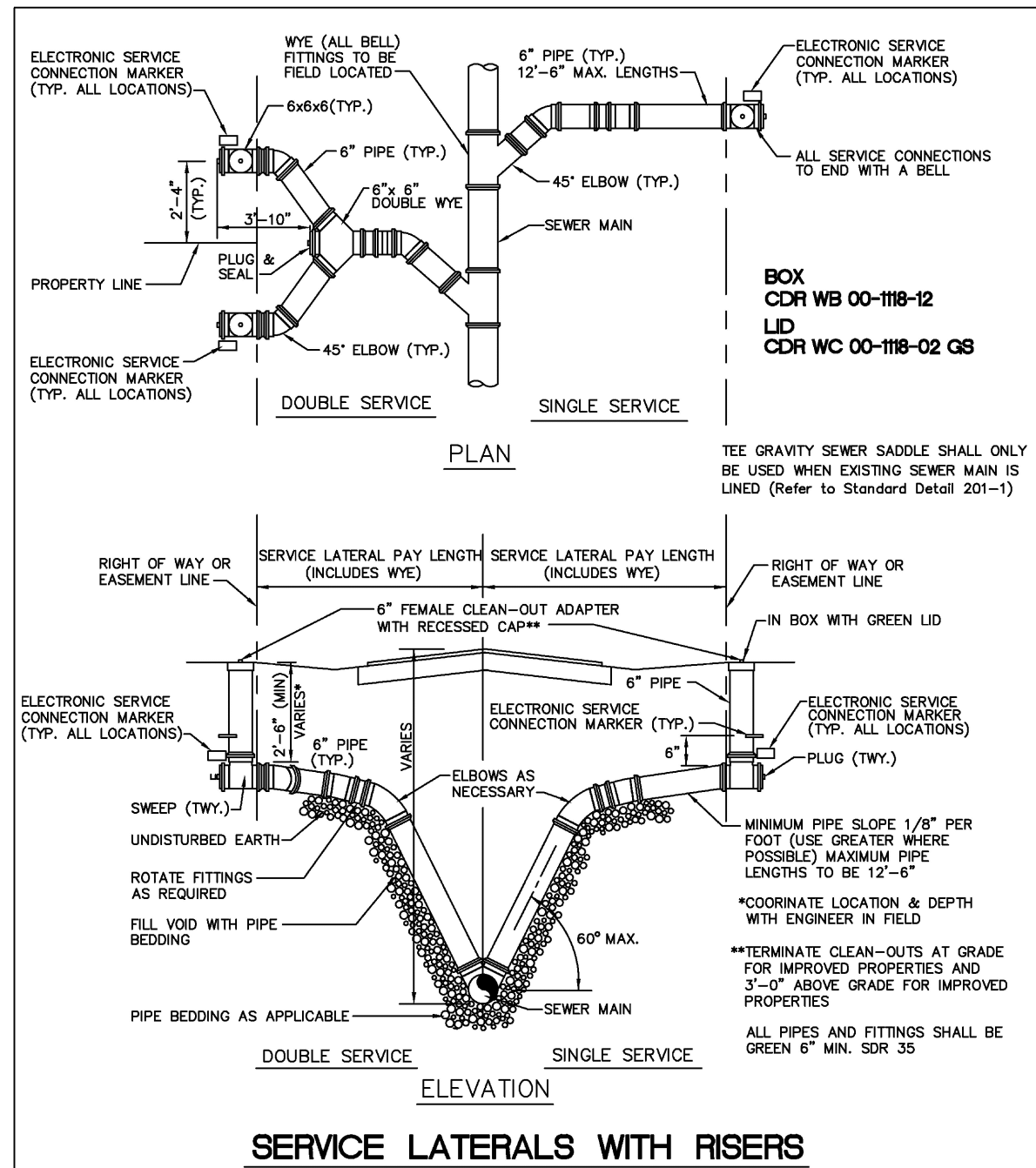
ENGINEERING STANDARDS 2025			
REVISIONS		ENGINEERING DIVISION CITY OF POMPAÑO BEACH	TYP. PAVERS DRIVEWAY SWALE
BY	DATE		
A.S.	10/22	SCALE: N.T.S.	DATE: OCT 2022 DWG. NO. 305-3



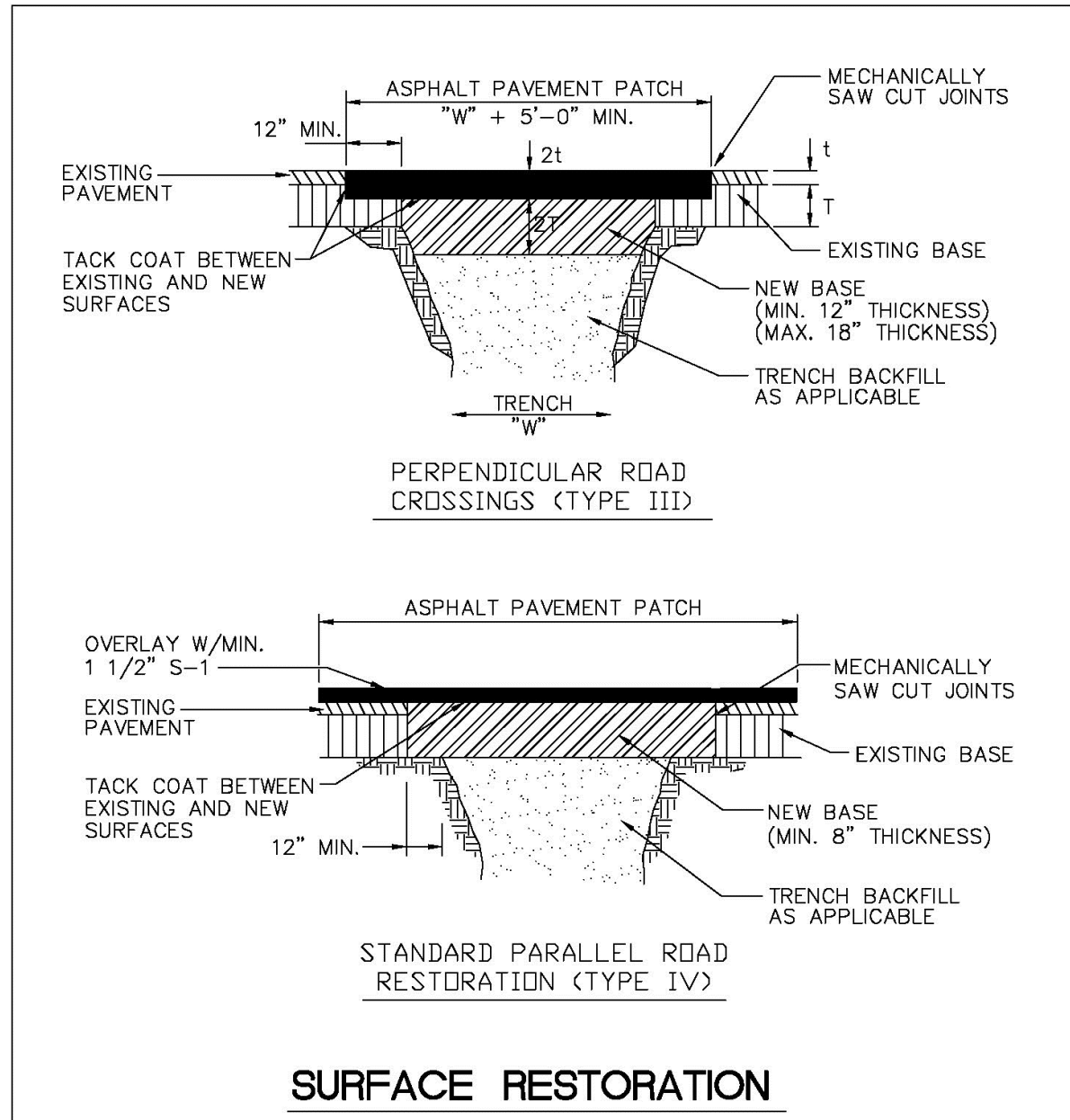
ENGINEERING STANDARDS 2025			
REVISIONS		ENGINEERING DIVISION CITY OF POMPAÑO BEACH	UNDERGROUND VALVE IDENTIFICATION MARKER
BY	DATE		
S.S.	JUNE 2005	SCALE: N.T.S.	DATE: FEB. 2022 DWG. NO. 115-1
T.W.	11-2007		
T.W.	02-2008		



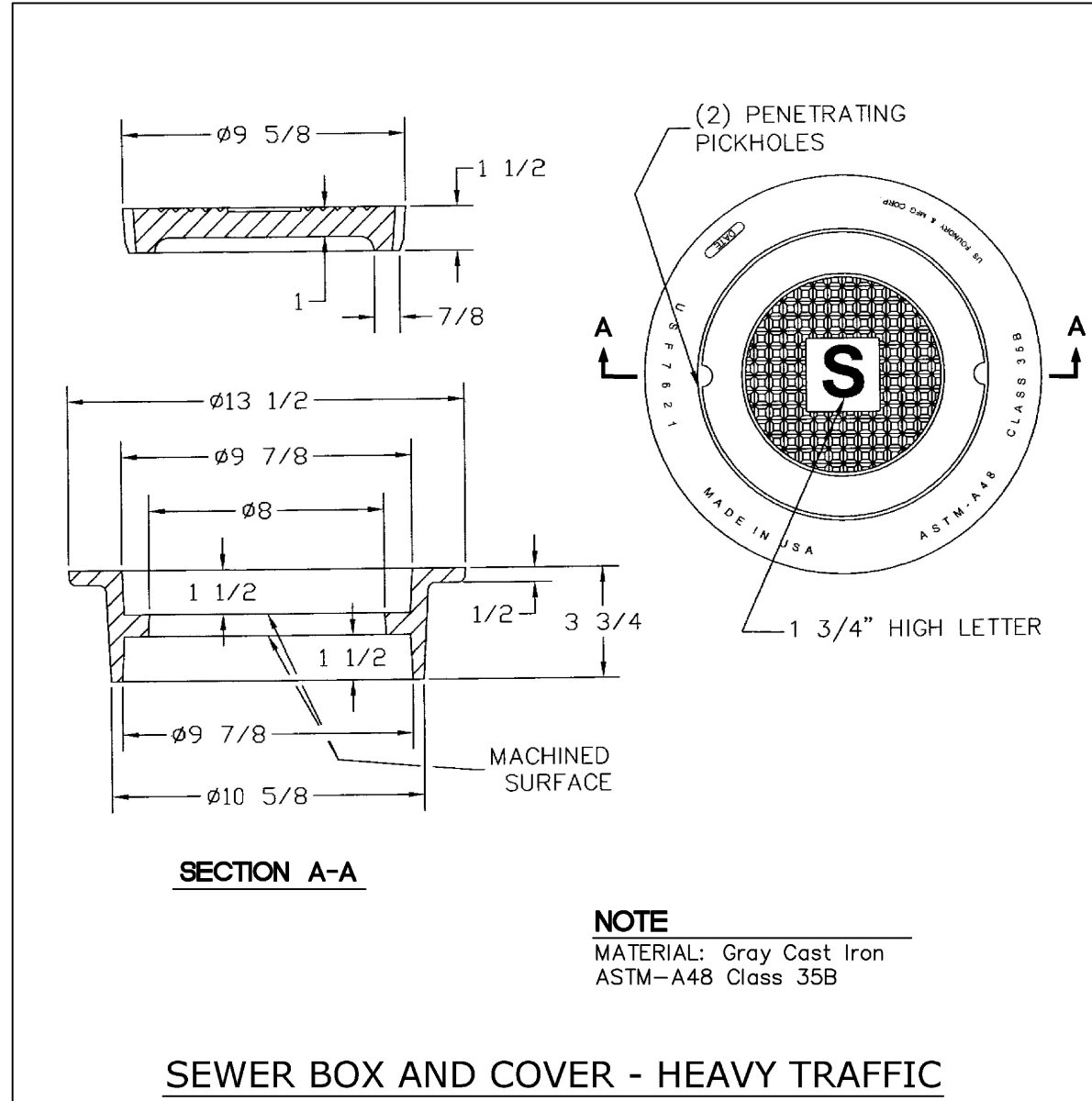
ENGINEERING STANDARDS 2025			
REVISIONS		ENGINEERING DIVISION CITY OF POMPAÑO BEACH	SURFACE RESTORATION
BY	DATE		
S.S.	5/05/10	SCALE: N.T.S.	DATE: MAY 2022 DWG. NO. 306-1



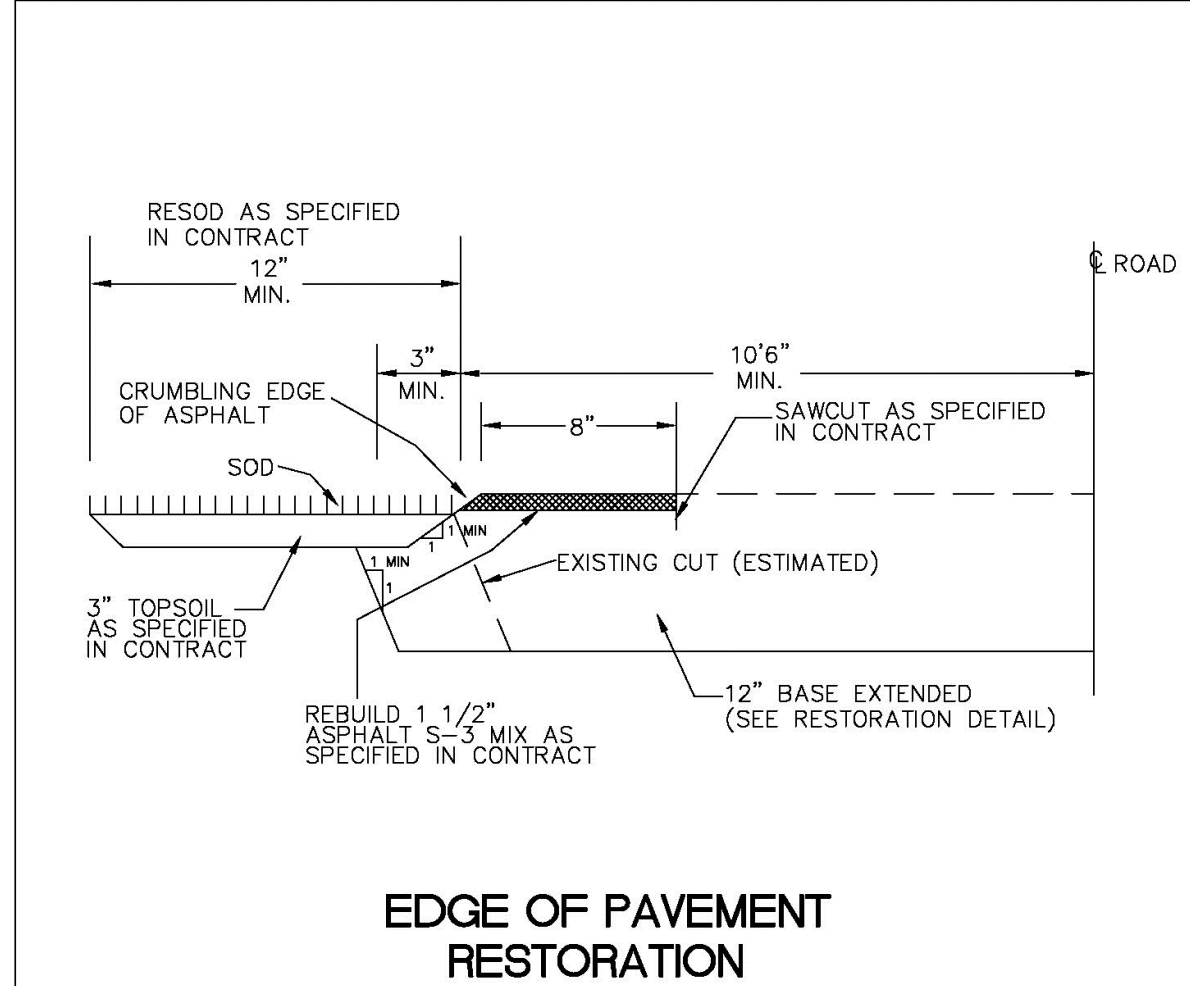
ENGINEERING STANDARDS 2025			
REVISIONS		ENGINEERING DIVISION CITY OF POMPAÑO BEACH	SERVICE LATERALS
BY	DATE		
T.W.	11-2007	SCALE: N.T.S.	DATE: JUNE 2022 DWG. NO. 200-1
S.S.	01/27/12		
S.S.	07/19/12		



ENGINEERING STANDARDS 2025			
REVISIONS		ENGINEERING DIVISION CITY OF POMPAÑO BEACH	SURFACE RESTORATION
BY	DATE		
		SCALE: N.T.S.	DATE: MAY 2022 DWG. NO. 306-2



ENGINEERING STANDARDS 2025			
REVISIONS		ENGINEERING DIVISION CITY OF POMPAÑO BEACH	SEWER BOX AND COVER HEAVY TRAFFIC
BY	DATE		
S.S.	12/06/18	SCALE: N.T.S.	DATE: JUNE 2022 DWG. NO. 210-3



ENGINEERING STANDARDS 2025			
REVISIONS		ENGINEERING DIVISION CITY OF POMPAÑO BEACH	EDGE OF PAVEMENT RESTORATION
BY	DATE		
		SCALE: N.T.S.	DATE: MAY 2022 DWG. NO. 306-4

ATTENTION IS DIRECTED TO THE FACT THAT THESE PLANS MAY HAVE BEEN REDUCED IN SIZE BY REPRODUCTION. THIS MUST BE CONSIDERED WHEN OBTAINING SCALED DATA.

Sunshine811  
Call 811 or www.sunshine811.com two full business days before digging to have utilities located and marked.  
Check positive response codes before you dig!

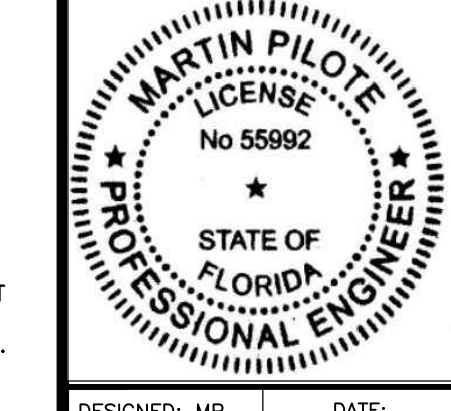
OWNERS AND USE OF THESE DOCUMENTS & SPECIFICATIONS ARE WITHIN THE SCOPE OF THE PROJECT AND ARE NOT TO BE USED FOR ANY OTHER PROJECT OR FOR ANY OTHER PURPOSE WITHOUT THE WRITTEN PERMISSION OF GLOBE ENGINEERING, INC.  
THIS PLAN MAY NOT BE REPRODUCED WITHOUT WRITTEN PERMISSION FROM GLOBE ENGINEERING, INC.

CITY COMMENTS		DESCRIPTION	REVISIONS
NO.	DATE		
1.	2026/02/04		

TOWNHOMES  
3305 SE 5TH STREET  
POMPAÑO BEACH, FL 33062  
CITY STANDARD DETAILS

Globe Engineering, Inc.  
Civil Engineering - Land Planning - Construction Management  
4839 SW 148 Avenue, Suite 507  
Fort Lauderdale, FL 33330  
Phone: 954-318-7628  
www.civil-engineer.us  
FBPE REGISTRY No. 8604

THIS ITEM HAS BEEN DIGITALLY SIGNED AND SEALED BY MARTIN PILOTE USING A DIGITAL SIGNATURE AND DATE. PRINTED COPIES OF THIS DOCUMENT ARE NOT CONSIDERED SIGNED AND SEALED AND THE SIGNATURE MUST BE VERIFIED ON ANY ELECTRONIC COPIES. PRINTED COPIES ARE ONLY VALID IF IT INCLUDES AN INK ORIGINAL HAND SIGNATURE.



DESIGNED: MP	DATE: 2/9/2026
DRAWN: SKC	
PROJECT NO: 2025-011	
DRAWING NAME: C-9	
SHEET NO: C-9 OF 11	

DRC

PZ25-12000046  
06/03/2026